

AGENDA

Broadband Working Group

Videoconference OR

Highway Committee Room

1425 Wisconsin Drive

Jefferson, WI 53549

Tuesday, April 25, 2023

9:00 a.m.

Join Zoom Meeting

<https://us06web.zoom.us/j/87697754337?pwd=cnVKMzd0TkZFY3RPRHpxMW5kTGxVdz09>

Meeting ID: 876 9775 4337

Passcode: Meet2022

Dial by your location: 1 312 626 6799

Committee Members

Curtis Backlund, Joan Fitzgerald, Matthew Foelker, Jeff Johns, Richard Jones, Robert Preuss, Amy Rinard

1. Call to order
2. Roll call (establish a quorum)
3. Certification of compliance with the Open Meetings Law
4. Communications
5. Public Comment (Members of the public who wish to address the Committee on specific agenda items must register their request at this time)
6. Approval of Minutes from April 5, 2023 Broadband Working Group
7. Approval of the agenda
8. Discussion and Possible Action related to planning activities under the Broadband Equity, Access, and Deployment (BEAD) Planning Grants
9. Discussion and Guidance in responding to UW-Extension Broadband Survey
10. Update on Broadband Projects
11. Discussion of next steps
12. Adjourn

A quorum of any Jefferson County Committee, Board, Commission or other body, including the Jefferson County Board of Supervisors, may be present at this meeting.

Individuals requiring special accommodations for attendance at the meeting should contact the County Administrator 24 hours prior to the meeting at 920-674-7101 so appropriate arrangements can be made.

**JEFFERSON COUNTY BOARD
COMMITTEE MINUTES**

April 5, 2023

Broadband Working Group

Curtis Backlund, Joan Fitzgerald, Matthew Foelker, Jeff Johns, Richard Jones, Robert Preuss, Amy Rinard

1. Call to Order

Meeting was called to order by Fitzgerald at 9:00 a.m.

2. Roll Call

Broadband Working Group Members present: Joan Fitzgerald, Matthew Foelker, Robert Preuss, Amy Rinard

Broadband Working Group Members present via ZOOM: Curtis Backlund, Jeff Johns

Broadband Working Group Members excused: Richard Jones

Others Present: Ben Wehmeier, County Administrator, Supervisor Anita Martin; Steve Sharp, Reporter, Mark Dodge, Tom Lieberherr, Ken Baehler, Gary Henshue, Bug Tussel.

Others Present via ZOOM: Jason Hafenstein, Gene Dalhoff, MadRep; Doug Barrett and Erin Wichmann, Bug Tussel; Michael Hellekson.

3. Certification of compliance with Open Meeting Law Requirements

Wehmeier certified compliance with the Open Meetings Law

4. Communications

None

5. Public Comment

Supervisor Martin read a letter from one of her constituents regarding concerns with lack of reliable broadband.

6. Approval of the July 6, 2022 Broadband Working Group minutes

Draft minutes were provided for review.

Motion by Rinard/Foelker to approve the July 6, 2022 Broadband Working Group minutes as printed. Motion passed 5-0.

7. Approval of the agenda

No changes were made.

8. Discussion and Update on Jefferson County Public Safety Commission Grants and Conduit Debt Broadband Projects

Wehmeier said the county received two Public Service Commission (PSC) grants and they are working with Bug Tussel and Hilbert Communications on starting these projects. Dodge went over the project plan and timeline. The team shared maps of the project plan. A dashboard will be available on our website showing the progress of the project. A quarterly newsletter will also be available. Dodge and Baehler demonstrated a management software tool that will be used for the project. No action taken.

9. Discussion and Update on Jefferson County Conduit Debt Data Center Project

This was discussed with Item 8. No action taken.

10. Discussion and Possible Action on Broadband Equity, Access, and Deployment (BEAD) Planning Grants

Wehmeier gave a presentation on Broadband Equity, Access, and Deployment (BEAD) Planning Grants. Wehmeier and Dalhoff discussed our grant options and key timelines. The Workgroup will focus on the planning and defining information for the grant at their next meeting. No action taken.

11. What is the BEAD Grant and purpose?

This discussion was part of item 10. No action taken.

12. Requirement of BEAD Grant/Collaboration with MadRep (Draft Agreement)

This discussion was part of item 10. No action taken.

13. Potential Next Steps for BEAD Planning

This discussion was part of item 10. No action taken.

14. Discussion of next steps

The next Broadband Working Group will meet on April 22, 2023 at 9:00 a.m.

15. Adjourn

Motion by Foelker/Rinard to adjourn at 11:06 a.m. Motion passed 4-0.

Broadband Equity, Access, and Deployment (B.E.A.D.)

Local Planning Grant Program

What is B.E.A.D.?

- Intention is through various planning grants – specifically county is to gather data /input to aid in the development of the Wisconsin's BEAD and Digital Equity Plan which will direct the deployment of federal dollars designated through the Bipartisan Infrastructure Law over the next 5 years – Plan is due in August
- State “support/sponsor”
 - PSC
 - UW- EX
 - WEDC/Office of Rural Prosperity (ORP)

Grant Process

- Short time period from release of PSC, Opt In and allocation of planning grant.
- Purpose of grant is to provide support in planning for future broadband efforts and assist in the state in developing a full plan
- Process to distribute future federal funds
- County had two options
 - Sole opt in
 - Partner with Redo (MADREP) and receive a 10% increase – so about \$20,171
 - They will serve as fiscal agent.

Key Timelines

- Grant Instructions (Note MadRep will be the applicant on our behalf)
 - April 3 – Grant Instructions released
 - April 28 – Deadline for submitting Questions and Assistance
 - May 1 – Applications due
 - Application will request up to three eligible planning activities that will be completed during the performance period – 1 Feb 2023 – 1 May 2025 with a short description of the intended outcomes or deliverables
 - By June 19, 2023 interim report submitted.

Preliminary Budget

- Due by May 1 – Placeholder budget – full allocation in “other”
- June 19th – detailed grant budget by cost categories
 - Contract/Consultants
 - Labor
 - Training
 - Travel
 - Supplies
 - Other

Initial Deliverables Due – June 19

- Convene an initial planning group or provide documentation of an existing group
- Begin outreach to stakeholder in county related to broadband planning
- Identify a preliminary regional broadband vision and goals
- Identify key barriers and opportunities to internet for all in county
- Develop a detailed budget by cost categories

Eligible Projects/Activities

- Research and data collection, including initial identification of unserved locations and underserved locations consistent with the rules, regulations, and processes the Federal Communication Commission has established for making these determinations in the Broadband DATA Maps.
- Publications, outreach, and communications support related to broadband and digital equity planning.
- Providing technical assistance to potential subgrantees (i.e. providers and communities), including through workshops and events; that support the development of the state 5-year action plan.
- Training for employees of political subdivisions of Wisconsin, and related staffing capacity or consulting or contracted support to effectuate the goals of the BEAD Program.
- Asset mapping across the county and/or region to catalogue broadband adoption, affordability, equity, access and deployment activities occurring within Wisconsin.
- Conducting surveys of unserved, underserved, and underrepresented communities to better understand barriers to internet adoption.
- Costs associated with meeting the local coordination requirements including capacity building at the local and regional levels or contracted support.

Examples of Allowable Activities that may be proposed

- Conduct outreach to improve and challenge the National Broadband Map.
- Hire new staff or allocate existing staff time to broadband planning; including but not limited to embedding broadband into regional and economic plans, or other community planning activities.
- Allocate staff time to participate in technical assistance workshops or webinars.
- Convening industry stakeholders to identify strategies related to financing broadband or preparing workforce.
- Hire or allocate staff to refine or review permitting processes related to broadband deployment.
- Training staff, elected officials, or local broadband champions to improve their knowledge of broadband, internet adoption, or federal grant administration.
- Host and document event(s) to discuss broadband and barriers to adoption.
- Purchase software licenses or data (mapping software, speed-tests) related to broadband planning, permitting, or adoption.

Examples of Allowable Activities that may be proposed

- Conduct surveys or promote existing surveys of citizens on their broadband needs and barriers.
- Hire or allocate staff time to perform analyses of the survey results, state and federal maps, data,
and existing resources related to broadband adoption.
- Send flyers advertising broadband listening sessions and digital equity events.
- Hosting meetings with potential internet service provider partners.
- Get outreach materials translated into other languages.
- Hire translators and/or interpreters and/or childcare providers to support Wisconsinites' participation in planning meetings.
- Create models for best practice public private partnerships for broadband deployment.
- Any other activities proposed by the applicant that are allowable by the funding and approved by the Commission.

Census Process

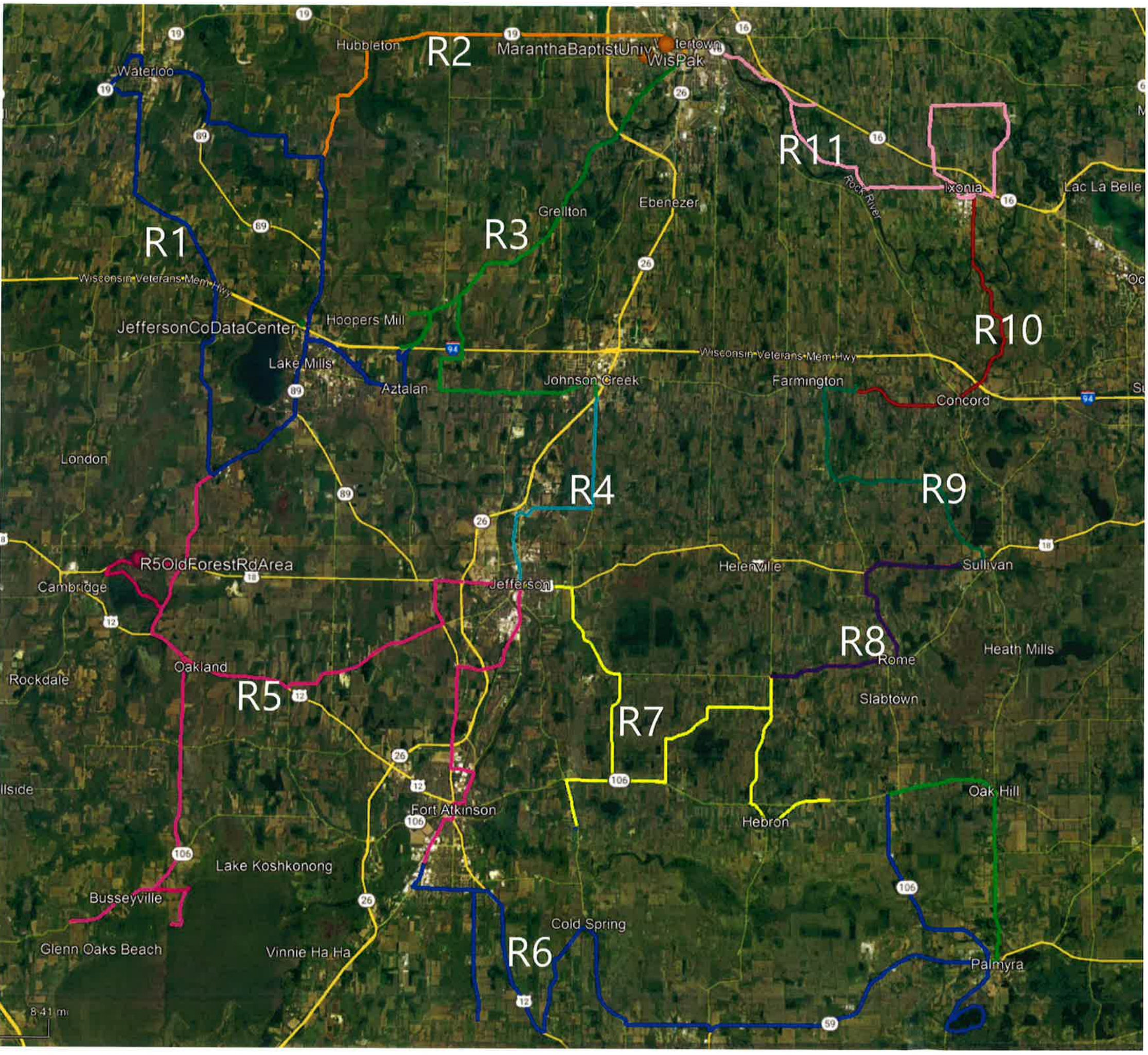
- Census to help gather data through a Qualtrics Survey Tools
- April 10 – counties will receive e-mail to participate
- May 15 – County Census Deadline

Technical Support Items

- GeoPartners speedtesting contract – Live now and we have access; need to develop a plan to launch, publicize and manage
- Regional Technical Assistance – Format TBD
 - What we have heard:
 - Meeting overload
 - Clarity
 - Include partners when discussing
 - Broadband Education
 - Capacity
 - How to address varying levels of needs
 - Leverage subject matter expertise in region Leverage ED and planning initiatives
 - Workforce / Tourism
 - Funding
- Regional toolkit
 - UW –EX – has not been released – later this week

County's Next Steps

- Further refine/identify key critical path items upon receipt of additional information from state sponsor agencies (PSC, UW-Ext, WEDC ORP); develop action task list
- Identify top three planning tasks to work with MadRep to submit proposed budget
- Continue engagement with partners
- Community outreach/information - Website



There are two regional hospitals in the county, the Watertown Regional Medical Center and the Fort Memorial Hospital in Fort Atkinson.

Human Services

The Jefferson County Human Services department is independent from the Public Health department, but they overlap in many shared services. Closely aligned with public health goals, the vision statement of the Human Services department is that “All citizens have the opportunity to access effective and comprehensive human services in an integrated and efficient manner”. In their work with county residents, the Human Services department strives to enhance the quality of life for individuals and families living in Jefferson County by addressing their needs in a respectful manner and enable citizens receiving services to function as independently as possible, while acknowledging their cultural differences.

Public Safety

Public safety services are provided by local and county departments and groups throughout the county, including the Sheriff’s Department and Emergency Management Department. Police, fire, and EMS services are provided by cities, villages, and towns throughout the county. Additional detail about the emergency response services are provided in *Chapter 10*, Intergovernmental Cooperation.

Communications Technology

Fast internet connectivity is essential for economic competitiveness in the future. Unfortunately, the cost of delivering broadband internet to rural areas is high due to the long distances between homes lowering the marginal return on investment for internet providers. As internet becomes essential to run a business, work from home, or attend virtual school sessions, the county passed a community broadband ordinance and established a broadband working group to develop strategies to expand access to fast internet throughout the county. The group is actively pursuing state grant opportunities to expand services.

Access to internet through direct broadband links and wireless connections can be a significant factor in attracting business and industry to Jefferson County. Broadband service objectives are twofold: 1) increasing overall access to service networks, and 2) increasing the capacity (speed) of service. Increasing the speed and coverage of broadband services can help businesses expand to new locations in Jefferson County, and help businesses increase their productivity and efficiency. This is increasingly true for in-home businesses.

The Wisconsin’s Broadband Plan (Broadband Plan) focuses on public-private partnerships to close the digital divide in Wisconsin. The Broadband Plan’s overarching goal is for every Wisconsinite to have affordable access to broadband service, if they so choose, by January 1, 2025. The state’s broadband target is 25 megabits per second (mbps) download speeds and 3 megabits per second upload speeds for all Wisconsin homes and businesses.⁴

High-speed internet requires fiber optic cables. Increasingly, fiber lines are standard with new development. Typically, developers finance the installation of main lines within an easement or right-of-way, and homeowners/businesses have the option to connect to the lines and/or utilize a wireless connection. The high-speed potential of fiber optics provides flexibility for individual companies and residents to select the service speed that meets their needs/budget.

Energy Practices

Sources of electrical power have seen a dramatic change in the past decade as the price of natural gas, wind, and solar decreased and gas replaced coal as the predominant source of electric power in the United States (see *Figure 11-2*). The development of facilities to support this energy transition has put new pressures on rural areas that

⁴ Wisconsin Broadband Plan, 2019, <https://psc.wi.gov/Documents/broadband/Wisconsin%20Broadband%20Plan%202019.pdf>

	<p>Regardless of whether wind or solar farm facilities are constructed by a public utility or a private company, there are Wisconsin Department of Agriculture, Trade and Consumer Protection (DATCP) notification requirements even if a formal agricultural impact statement is not required. Wind turbines, access roads, and temporary workspaces such as laydown yards and crane paths can negatively impact agricultural operations if precautions are not taken.⁶</p>
Broadband Expansion	<p>The county should strategically help to expand broadband access in commercial areas and rural residential areas. Jefferson County should explore the following strategies to increase internet service capacity:</p> <ul style="list-style-type: none"> • Encourage development in locations that are already served by, or which can reasonably be served by, high-speed internet. • Encourage access to fiber cables for all developments. • Match service capacity to user needs. • Coordinate with local providers to improve internet service maps. • Encourage internet service agreements prior to approval of the preliminary plat. This ensures that cable installation is financed by the developer. • Promote the “dig once” concept (parallel installation of roads and utilities). • Expand wireless options for areas which cannot be physically connected to the broadband network. • Identify ideal sites for telecom towers to ensure fiber connectivity and widespread service area coverage, while minimizing visual impacts and other nuisances. • Encourage building/internet sharing arrangements where capacity exists. • Plan for mutually supportive broadband facilities between Jefferson County, cities, villages, and towns.
Public Health Programs	<p>The 2020 COVID-19 pandemic highlighted the need for coordinated public health efforts across agencies, jurisdictions, and providers. The county should continue to support the existing services provided by its Public Health Department and should coordinate activities with other health organizations to assess and provide public health services. The Jefferson County aging and disability resource center can connect residents with Wisconsin Department of Health Services programs.</p>
Outdoor Recreation	<p>The Parks Department completed an update of the Parks, Recreation, and Open Space Plan in the summer of 2020, which sets the county’s goals for the future of the recreation system. The plan identifies several implementation strategies and recommendations to aid the county in bringing the visions for the recreation system to life. These strategies are organized into six categories:</p> <ul style="list-style-type: none"> • Park System Planning Strategies • Recreation and Conservation Strategies • Acquisition Strategies • Departmental Management Strategies • Partnership and Fund-Raising Strategies • Marketing Strategies

⁶ Wisconsin Department of Agriculture, Trade and Consumer Protection, Agricultural Impact Statements: Wind Farms, https://datcp.wi.gov/Pages/Programs_Services/AISWindFarms.aspx



Broadband and Utility Infrastructure

Access to infrastructure is needed for the essential functions of our lives. From grabbing a drink of water to accessing data in the field, broadband and utility infrastructure are needed. There will likely never be a time where we are using less data, so aiming for access for all is vital for future success.

B1. Invest in and support broadband infrastructure

Continue to explore, support, and invest in expanded broadband service for all Jefferson County residents. Activities may include time invested in meeting with local providers and municipalities or expanding programming offerings or tools.

	ONGOING	1 YEAR	2 YEAR	3 YEAR	
LEAD DEPARTMENT	Administration				
SUPPORTING DEPARTMENTS	Economic Development, Planning				
COST	\$	\$	\$\$\$	\$\$\$\$	UNKNOWN
BARRIERS TO IMPLEMENTATION	Funding, Staff Capacity				
RELEVANT PLANS	Broadband Grant Programs				
RESOURCES	PSC Wisconsin				

B2. Create a utility resource map

Identify and map existing utility resources throughout Jefferson County, including municipal water and sanitary service, broadband, and electric providers. Utilize map to understand gaps in service or areas for opportunity.

	ONGOING	1 YEAR	2 YEAR	3 YEAR
LEAD DEPARTMENT	Land Information			
SUPPORTING DEPARTMENTS	Administration, Planning, Economic Development, Highway			
COST	\$	\$	\$\$\$	\$\$\$\$
BARRIERS TO IMPLEMENTATION	Staff capacity			
RELEVANT PLANS	Local Comprehensive Plans			
RESOURCES	Local Municipalities, Local Service Providers			

B3. Large utility uses zoning regulations

Review and update the zoning ordinance related to large utility uses (e.g., 100 megawatts) to ensure the ordinance guides development in a manner that support County goals. Ensure that updates comply with state statute and associated regulatory requirements.

	ONGOING	1 YEAR	2 YEAR	3 YEAR
LEAD DEPARTMENT	Corporation Counsel			
SUPPORTING DEPARTMENTS	Planning, Administration, Economic Development, Land and Water			
COST	\$	\$	\$\$\$	\$\$\$\$
BARRIERS TO IMPLEMENTATION	Staff skillset, Local support, Board support			
RELEVANT PLANS	Zoning Ordinance			
RESOURCES	Other County Ordinances, State Statutes			
CONNECTED ACTIONS	R1, R5			

B4. Create a broadband connection toolkit

Develop a toolkit or resource to assist new residents and businesses with identifying and connecting to broadband services.

	ONGOING	1 YEAR	2 YEAR	3 YEAR	
LEAD DEPARTMENT	Administration				
SUPPORTING DEPARTMENTS	Economic Development				
COST	\$	\$\$	\$\$\$	\$\$\$\$	UNKNOWN
BARRIERS TO IMPLEMENTATION	Staff capacity				
RELEVANT PLANS					
RESOURCES	Local Municipalities				

B5. Create an infrastructure plan

Develop an infrastructure plan that assesses future infrastructure needs throughout the County. This plan will look to understand services provided at the municipal level (e.g., sanitary sewer, water) and services provided across boundaries (e.g., electric, telecommunications). Efforts to understand future expansion potential and responding needs to serve as an economic development and planning tool.

	ONGOING	1 YEAR	2 YEAR	3 YEAR	
LEAD DEPARTMENT	Administration				
SUPPORTING DEPARTMENTS	Economic Development, Planning, Land Information, Highway				
COST	\$	\$\$	\$\$\$	\$\$\$\$	UNKNOWN
BARRIERS TO IMPLEMENTATION	Funding, Staff capacity, Lack of plan, Staff skillset				
RELEVANT PLANS	Local Comprehensive Plans				
RESOURCES	Local Municipalities, Utility Providers, Regional Planning Organizations				

JEFFERSON COUNTY GOALS - 2019 – 2027

MARCH 2019

GOAL 1: JEFFERSON COUNTY IS COMMITTED TO SUSTAINABLE GROWTH THAT IMPROVES THE LIVES OF OUR RESIDENTS AND OTHER STAKEHOLDERS AND CREATES A MORE POSITIVE FISCAL ENVIRONMENT.

BUSINESS

- Build a process that will attract new business workers and residents to the County
 - Attract, retain and develop new business
 - Business markets focus on research, technology and advanced manufacturing
 - Create an economic environment that allows for strong income levels
 - Keep pace with advancing technologies
- Develop broadband to ensure/improve coverage of digital data county wide
 - Expand access to and choices for broadband Internet throughout the county by pursuing funding options and collaborations with business, Internet service providers and other local governments

AGRICULTURE

- Support and sustain our agricultural economy including:
 - ag-tourism
 - farm-to-table initiatives
 - emerging farm markets
 - keeping current with agricultural technologies and production trends
 - Create a balance between preserving agricultural lands and development.

AFFORDABLE HOUSING

- Assess the overall housing market
- Work with local cities, municipalities and developers to develop more affordable housing
- Work with municipalities and developers to encourage the maintenance, development and re-development of housing-county wide.

WORKFORCE

- Create a workforce development plan that includes:
 - Jobs that pay at a minimum, a living wage
 - A workforce development to attract workers to Jefferson County

GOAL 8	Develop a broadband expansion plan to improve the quality and coverage of digital data throughout the county
Strategy 8.1	<p>Form a Broadband Steering Committee to potentially include members from:</p> <ul style="list-style-type: none"> • County • Municipalities • Towns • Tech experts • Economic development • Business community • Public
Strategy 8.2	Review existing public and private broadband plans for potential examples
Strategy 8.3	<p>Research grant opportunities via state or federal sources</p> <p>a. Determine person to attend seminar for more information</p>
Strategy 8.4	Prepare and submit Broadband Forward! application to get certification in WI
Strategy 8.5	Prepare and submit other grant applications available

67. Counties and communities across the state face a variety of obstacles that will make it difficult to achieve high-speed broadband internet access for everyone. Please evaluate each item by indicating the extent to which you believe each item below is or will be an OBSTACLE for the county.

	Major Obstacle	Moderate Obstacle	Minor Obstacle	Not An Obstacle	Don't Know
a. Availability of materials	<input type="radio"/>	<input type="radio"/>	<input type="radio"/>	<input type="radio"/>	<input type="radio"/>
b. County/municipalities don't believe it is their role	<input type="radio"/>	<input type="radio"/>	<input type="radio"/>	<input type="radio"/>	<input type="radio"/>
c. County residents don't believe it is the role of government to expand access	<input type="radio"/>	<input type="radio"/>	<input type="radio"/>	<input type="radio"/>	<input type="radio"/>
d. Legislative or regulatory barriers	<input type="radio"/>	<input type="radio"/>	<input type="radio"/>	<input type="radio"/>	<input type="radio"/>
e. Supply chain issues delaying installation	<input type="radio"/>	<input type="radio"/>	<input type="radio"/>	<input type="radio"/>	<input type="radio"/>
f. Internet Service Provider participation	<input type="radio"/>	<input type="radio"/>	<input type="radio"/>	<input type="radio"/>	<input type="radio"/>
g. Procurement or contracting challenges	<input type="radio"/>	<input type="radio"/>	<input type="radio"/>	<input type="radio"/>	<input type="radio"/>
h. Labor shortages to install broadband infrastructure in a timely manner	<input type="radio"/>	<input type="radio"/>	<input type="radio"/>	<input type="radio"/>	<input type="radio"/>
i. Due to protected lands or natural area restrictions	<input type="radio"/>	<input type="radio"/>	<input type="radio"/>	<input type="radio"/>	<input type="radio"/>
j. Language barriers	<input type="radio"/>	<input type="radio"/>	<input type="radio"/>	<input type="radio"/>	<input type="radio"/>
k. Religious or cultural beliefs	<input type="radio"/>	<input type="radio"/>	<input type="radio"/>	<input type="radio"/>	<input type="radio"/>
l. Affordability for a significant number of households in the county	<input type="radio"/>	<input type="radio"/>	<input type="radio"/>	<input type="radio"/>	<input type="radio"/>
m. Topography or natural and physical features of the area	<input type="radio"/>	<input type="radio"/>	<input type="radio"/>	<input type="radio"/>	<input type="radio"/>
n. Low rate of adequate household device ownership (e.g. computers and tablets)	<input type="radio"/>	<input type="radio"/>	<input type="radio"/>	<input type="radio"/>	<input type="radio"/>
o. Lack of local leadership	<input type="radio"/>	<input type="radio"/>	<input type="radio"/>	<input type="radio"/>	<input type="radio"/>
p. Lack of personnel	<input type="radio"/>	<input type="radio"/>	<input type="radio"/>	<input type="radio"/>	<input type="radio"/>
q. Lack of coordination between municipalities	<input type="radio"/>	<input type="radio"/>	<input type="radio"/>	<input type="radio"/>	<input type="radio"/>
r. Lack of coordination between tribal and nontribal entities	<input type="radio"/>	<input type="radio"/>	<input type="radio"/>	<input type="radio"/>	<input type="radio"/>
s. Lack of coordination between governing bodies and community members	<input type="radio"/>	<input type="radio"/>	<input type="radio"/>	<input type="radio"/>	<input type="radio"/>
t. Lack of funding to reach all unserved areas	<input type="radio"/>	<input type="radio"/>	<input type="radio"/>	<input type="radio"/>	<input type="radio"/>
u. Lack of local digital skills programs or expertise	<input type="radio"/>	<input type="radio"/>	<input type="radio"/>	<input type="radio"/>	<input type="radio"/>
v. Lack of digital skills among county residents	<input type="radio"/>	<input type="radio"/>	<input type="radio"/>	<input type="radio"/>	<input type="radio"/>
w. Lack of competition for broadband services	<input type="radio"/>	<input type="radio"/>	<input type="radio"/>	<input type="radio"/>	<input type="radio"/>
x. Lack of desire among residents to utilize broadband service	<input type="radio"/>	<input type="radio"/>	<input type="radio"/>	<input type="radio"/>	<input type="radio"/>

71. We would like to know more about the County's broadband PRIORITIES. Please evaluate each item related to **broadband accessibility** below by indicating the extent to which you believe the statement is a PRIORITY for the county.

	Urgent Priority	High Priority	Moderate Priority	Low Priority	Not a Priority	Don't Know
a. Providing broadband access to everyone living in the county	<input type="radio"/>	<input type="radio"/>	<input type="radio"/>	<input type="radio"/>	<input type="radio"/>	<input type="radio"/>
b. Providing affordable broadband to all residents in the county	<input type="radio"/>	<input type="radio"/>	<input type="radio"/>	<input type="radio"/>	<input type="radio"/>	<input type="radio"/>
c. Ensuring all residents in the county have a minimal level of digital skills	<input type="radio"/>	<input type="radio"/>	<input type="radio"/>	<input type="radio"/>	<input type="radio"/>	<input type="radio"/>
d. Providing telehealth access to all residents in the county	<input type="radio"/>	<input type="radio"/>	<input type="radio"/>	<input type="radio"/>	<input type="radio"/>	<input type="radio"/>
e. Improving access for all residents in the county with disabilities	<input type="radio"/>	<input type="radio"/>	<input type="radio"/>	<input type="radio"/>	<input type="radio"/>	<input type="radio"/>
f. Providing access for all residents in the county with limited incomes	<input type="radio"/>	<input type="radio"/>	<input type="radio"/>	<input type="radio"/>	<input type="radio"/>	<input type="radio"/>
g. Providing access for underrepresented groups within the county	<input type="radio"/>	<input type="radio"/>	<input type="radio"/>	<input type="radio"/>	<input type="radio"/>	<input type="radio"/>
h. Increasing access for k-12 students in the county	<input type="radio"/>	<input type="radio"/>	<input type="radio"/>	<input type="radio"/>	<input type="radio"/>	<input type="radio"/>
i. Ensuring schools have reliable access	<input type="radio"/>	<input type="radio"/>	<input type="radio"/>	<input type="radio"/>	<input type="radio"/>	<input type="radio"/>
j. Ensuring libraries have reliable access	<input type="radio"/>	<input type="radio"/>	<input type="radio"/>	<input type="radio"/>	<input type="radio"/>	<input type="radio"/>
k. Providing access for all businesses in the county	<input type="radio"/>	<input type="radio"/>	<input type="radio"/>	<input type="radio"/>	<input type="radio"/>	<input type="radio"/>
l. Increasing access for all senior residents (age 65+) in the county	<input type="radio"/>	<input type="radio"/>	<input type="radio"/>	<input type="radio"/>	<input type="radio"/>	<input type="radio"/>
m. Ensuring all emergency services have reliable access	<input type="radio"/>	<input type="radio"/>	<input type="radio"/>	<input type="radio"/>	<input type="radio"/>	<input type="radio"/>
n. Ensuring all units of government have reliable access	<input type="radio"/>	<input type="radio"/>	<input type="radio"/>	<input type="radio"/>	<input type="radio"/>	<input type="radio"/>

72. Please identify the top three priorities for the county regarding **broadband accessibility**. The top three may or may not include the statements above.

73. Please evaluate each item related to **economic development goals** below by indicating the extent to which you believe the statement is a **PRIORITY** for the county.

	Urgent Priority	High Priority	Moderate Priority	Low Priority	Not a Priority	Don't Know
a. Maintaining or increasing property values	<input type="radio"/>	<input type="radio"/>	<input type="radio"/>	<input type="radio"/>	<input type="radio"/>	<input type="radio"/>
b. Growing tax base	<input type="radio"/>	<input type="radio"/>	<input type="radio"/>	<input type="radio"/>	<input type="radio"/>	<input type="radio"/>
c. Supporting the internet connectivity needs of precision agriculture	<input type="radio"/>	<input type="radio"/>	<input type="radio"/>	<input type="radio"/>	<input type="radio"/>	<input type="radio"/>
d. Retaining and attracting adults in prime workforce years, ages 25 to 54	<input type="radio"/>	<input type="radio"/>	<input type="radio"/>	<input type="radio"/>	<input type="radio"/>	<input type="radio"/>
e. Retaining and attracting working young people ages 18 to 24	<input type="radio"/>	<input type="radio"/>	<input type="radio"/>	<input type="radio"/>	<input type="radio"/>	<input type="radio"/>
f. Retaining existing businesses/employers	<input type="radio"/>	<input type="radio"/>	<input type="radio"/>	<input type="radio"/>	<input type="radio"/>	<input type="radio"/>
g. Attracting new businesses/employers	<input type="radio"/>	<input type="radio"/>	<input type="radio"/>	<input type="radio"/>	<input type="radio"/>	<input type="radio"/>
h. Providing the necessary broadband infrastructure for new business/employers	<input type="radio"/>	<input type="radio"/>	<input type="radio"/>	<input type="radio"/>	<input type="radio"/>	<input type="radio"/>
i. Supporting existing businesses/employers	<input type="radio"/>	<input type="radio"/>	<input type="radio"/>	<input type="radio"/>	<input type="radio"/>	<input type="radio"/>
j. Increasing competitiveness of existing businesses/employers	<input type="radio"/>	<input type="radio"/>	<input type="radio"/>	<input type="radio"/>	<input type="radio"/>	<input type="radio"/>
k. Supporting tourism-related businesses and employers	<input type="radio"/>	<input type="radio"/>	<input type="radio"/>	<input type="radio"/>	<input type="radio"/>	<input type="radio"/>
l. Creating new regional jobs in the telecom and broadband sector	<input type="radio"/>	<input type="radio"/>	<input type="radio"/>	<input type="radio"/>	<input type="radio"/>	<input type="radio"/>
m. Increasing e-commerce for local businesses and employers	<input type="radio"/>	<input type="radio"/>	<input type="radio"/>	<input type="radio"/>	<input type="radio"/>	<input type="radio"/>

74. Please identify the top three priorities for the county regarding **economic development goals**. The top three may or may not include the statements above.

75. Please evaluate each item related to **government service infrastructure goals** below by indicating the extent to which you believe the statement is a **PRIORITY** for the county.

	Urgent Priority	High Priority	Moderate Priority	Low Priority	Not a Priority	Don't Know
a. Improving emergency management	<input type="radio"/>	<input type="radio"/>	<input type="radio"/>	<input type="radio"/>	<input type="radio"/>	<input type="radio"/>
b. Improving broadband availability to implement new technologies in government services	<input type="radio"/>	<input type="radio"/>	<input type="radio"/>	<input type="radio"/>	<input type="radio"/>	<input type="radio"/>
c. Increasing or improving digital skills for local government officials	<input type="radio"/>	<input type="radio"/>	<input type="radio"/>	<input type="radio"/>	<input type="radio"/>	<input type="radio"/>
d. Providing individuals access from home to education for K-12 students	<input type="radio"/>	<input type="radio"/>	<input type="radio"/>	<input type="radio"/>	<input type="radio"/>	<input type="radio"/>
e. Providing individuals access from home to education for technical school or university/college students	<input type="radio"/>	<input type="radio"/>	<input type="radio"/>	<input type="radio"/>	<input type="radio"/>	<input type="radio"/>
f. Providing individuals access from home to education for adults in need of continuing education or job training	<input type="radio"/>	<input type="radio"/>	<input type="radio"/>	<input type="radio"/>	<input type="radio"/>	<input type="radio"/>
g. Providing individuals access from their homes to county or municipal government services or proceedings online	<input type="radio"/>	<input type="radio"/>	<input type="radio"/>	<input type="radio"/>	<input type="radio"/>	<input type="radio"/>
h. Providing individuals access from their homes to state or federal government services online	<input type="radio"/>	<input type="radio"/>	<input type="radio"/>	<input type="radio"/>	<input type="radio"/>	<input type="radio"/>

76. Please identify the top three priorities for the county regarding **government service infrastructure goals**. The top three may or may not include the statements above.

77. Please evaluate each item related to **digital equity efforts** below by indicating the extent to which you believe the statement is a **PRIORITY** for the county.

	Urgent Priority	High Priority	Moderate Priority	Low Priority	Not a Priority	Don't Know
a. Establishing a digital skills program	<input type="radio"/>	<input type="radio"/>	<input type="radio"/>	<input type="radio"/>	<input type="radio"/>	<input type="radio"/>
b. Providing internet-enabled devices to covered populations (e.g., low-income, disabled, senior citizens)	<input type="radio"/>	<input type="radio"/>	<input type="radio"/>	<input type="radio"/>	<input type="radio"/>	<input type="radio"/>
c. Making sure broadband is affordable for every resident	<input type="radio"/>	<input type="radio"/>	<input type="radio"/>	<input type="radio"/>	<input type="radio"/>	<input type="radio"/>
d. Supporting covered populations to sign up for the Affordable Connectivity Program	<input type="radio"/>	<input type="radio"/>	<input type="radio"/>	<input type="radio"/>	<input type="radio"/>	<input type="radio"/>
e. Creating programs to teach internet safety and security	<input type="radio"/>	<input type="radio"/>	<input type="radio"/>	<input type="radio"/>	<input type="radio"/>	<input type="radio"/>
f. Supporting a program to provide quality technical support (computer or software)	<input type="radio"/>	<input type="radio"/>	<input type="radio"/>	<input type="radio"/>	<input type="radio"/>	<input type="radio"/>
g. Increasing civic and social engagement.	<input type="radio"/>	<input type="radio"/>	<input type="radio"/>	<input type="radio"/>	<input type="radio"/>	<input type="radio"/>

78. Please identify the top three priorities for the county regarding **digital equity efforts**. The top three may or may not include the statements above.

79. Is there anything else you would like to share with us regarding broadband in your county?

THANK YOU FOR COMPLETING THE SURVEY!

If you agreed to sharing documents (broadband maps, broadband data, comprehensive plan, etc.) with us, please click on the link below to upload the documents.

[County Broadband Survey File Upload](#)